

# VersaBlue® N Series Adhesive Melter

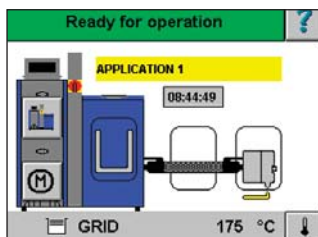
Nordson

## 25, 50 and 100 liter melters

Nordson VersaBlue N series melters are designed for precise, demanding hot melt adhesive applications. A choice of up to four single-stream or two dual-stream metering spur-gear pumps with variable-speed AC motors satisfies a wide range of manufacturing requirements. A grid and reservoir tank design reduces adhesive degradation while maximizing adhesive throughput. A powerful industrial PC provides full control of the adhesive system via a touch-screen interface. The VersaBlue N series melter also features optional Siemens® S7 and Allen-Bradley® ControlLogix® PLC controls to increase flexibility and ease integration.

VersaBlue N series melters:

- Install quickly and easily
- Provide easy day-to-day operation
- Simplify routine maintenance
- Maximize uptime
- Serve a broad range of industries



Graphical, touch-screen system control with status display of the tank, hose(s) and gun(s)



Large, accessible tank opening allows easier filling and cleaning



Entry panels make access to melter components quick and easy



Pump shut-off valve and single-tool removal provide quick, easy pump replacement

# VersaBlue® N Series 25, 50 and 100 Adhesive Melters

## Specifications

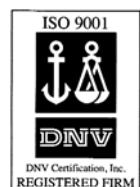
<b>Type of System</b>	Release-coated grid and reservoir Spur-gear pump with variable AC motor	<b>Electrical Service<sup>4</sup></b>	200 VAC 3 phase 50/60 Hz <sup>5</sup> 200 to 240 VAC 3 phase 50/60 Hz 380 to 415 VAC-Y (3 phase N/PE) 50/60 Hz 400 VAC 3 phase 50/60 Hz <sup>5</sup> 480 VAC 3 phase 50/60 Hz <sup>5</sup>
<b>Number of Pumps</b>	Up to 4 single stream or 2 dual stream	<b>Input/Output Capability Standard</b>	9 outputs 13 inputs
<b>Maximum Pump Rate<sup>1 &amp; 2</sup></b>	1.4 to 48.0 kg/hr (3 to 105.6 lb/hr)	<b>Maximum Pressure Sensors<sup>6</sup></b>	8 internal
<b>Filter Type</b>	Saturn® basket-style filter	<b>Melter Dimensions (W x H x D)</b>	1100 x 1382 x 1035 mm (43.3 x 54.4 x 40.8 in)
<b>Maximum Working Hydraulic Pressure</b>	85 bars/8.5 MPa (1230 psi)	<b>Installation Dimensions (W x H x D)</b>	2699 x 1205 x 1281 mm (106.3 x 61.6 x 50.4 in)
<b>Operating Temperature Range</b>	40 to 230°C (100 to 450°F)	<b>Protection</b>	IP 54
<b>Ambient Temperature Range</b>	0 to 50°C (32 to 122°F)		
<b>Temperature Control Stability</b>	±1°C (2°F)		

	VersaBlue 25 N	VersaBlue 50 N	VersaBlue 100 N
<b>Holding Capacity</b>	25 L (1526 in <sup>3</sup> ) 23.8 kg (52.5 lb)	50 L (3051 in <sup>3</sup> ) 48.5 kg (104.7 lb)	100 L (6102 in <sup>3</sup> ) 97 kg (213 lb)
<b>Throughput (per hour)<sup>1</sup></b>	40 kg (88 lb)	75 kg (165.4 lb)	150 kg (330 lb)
<b>Melt Rate (per hour)<sup>1</sup></b>	25 kg (55 lb)	50 kg (110.2 lb)	100 kg (220 lb)
<b>Weight (empty)<sup>3</sup></b>	265 kg (584 lb)	290 kg (639 lb)	360 kg (794 lb)
<b>Number of Guns</b>	2, 4, 6 or 8	2, 4, 6 or 8	2, 4, 6 or 8
<b>Maximum System Power Capacity</b>			
<b>2 hoses/guns</b>	10280 watts	15605 watts	20740 watts
<b>4 hoses/guns</b>	13880 watts	19205 watts	27940 watts
<b>6 hoses/guns</b>	17480 watts	22805 watts	31540 watts
<b>8 hoses/guns</b>	21080 watts	26405 watts	35140 watts



Quick plug-in hose/gun pairs

Quick connect I/O & Profibus® plugs



Siemens is a registered trademark of Siemens AG  
Profibus is a registered trademark of Profibus International.  
Allen-Bradley, ControlNet and ControlLogix are registered trademarks of Allen-Bradley Co.

<sup>1</sup> Actual rates will vary depending on adhesive type, application parameters and input voltage.

<sup>2</sup> Range given is for maximum pump rate of various pumps available.

<sup>3</sup> Weight depends on melter configuration.

<sup>4</sup> Permitted deviation from rated line voltage is ±10%.

<sup>5</sup> With integrated transformer.

<sup>6</sup> Up to 8 external sensors optional.

Castors optional. Profibus, ControlNet® and Ethernet I/P optional.

For more information, talk with your Nordson representative or contact your Nordson regional office.

### United States

Dawsonville, Georgia  
Telephone: (800) 727-7224  
Facsimile: (706) 216-2981

### Europe

Lüneburg, Germany  
Telephone: (49) 4131-894-0  
Facsimile: (49) 4131-894-149

### Japan

Tokyo, Japan  
Telephone: (81) 3-5762-2700  
Facsimile: (81) 3-5762-2701

### Asia/Australia/Latin America

Amherst, Ohio  
Telephone: (440) 985-4496  
Facsimile: (440) 985-1096

[www.nordson.com](http://www.nordson.com)



When you expect more.®