

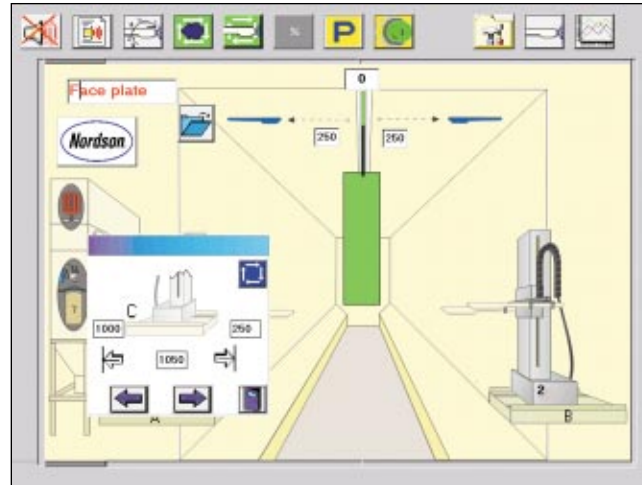
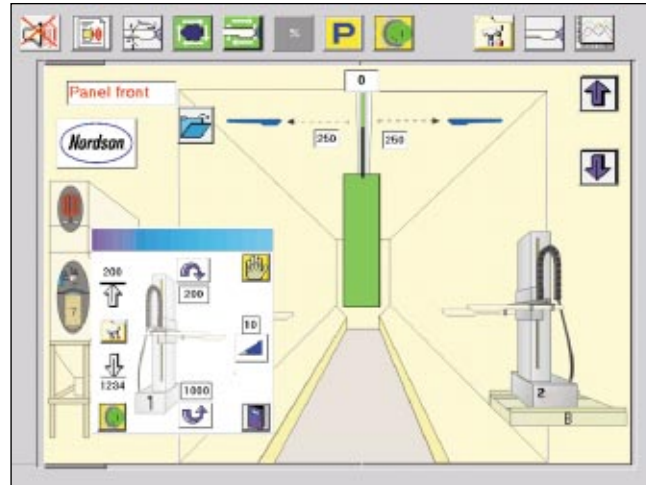
Systems Components (continued...)

4. Digital Flow and Atomising Air Control Valves:

Replacing the standard regulators for control via the PLC, these valves offer excellent sensitivity with a short response time and a very low hysteresis 1% for high repeatability <0.5%. Real-time closed-loop control is offered. The input setting is constantly compared with the output pressure and adjusted in real-time SureCoat Electrostatic PCBs.

5. Conveyor Encoder:

Provides the input to the PLC for synchronisation of outputs with the conveyor motion. The conveyor speed is continuously displayed on screen.



6. Gun Mover:

Oscillators and Reciprocators may be controlled from the screen, with vertical beam arrays the reciprocator stroke and speed may be automatically set if required, or recipes selected.

7. Z-Axis Gun Positioner:

May be used to automatically follow the product width profile or to follow a product recipe; on colour change these may be used to traverse the guns through a cleaning air curtain.

8. Data Output to Remote PC or Network:

Communications via most standards is supported including Ethernet. Enables the Operator screens to be viewed off-line, system diagnostic screens may also be viewed and production statistics.

9. Modem (Option):

Enables remote support from Nordson software. Application support, software upgrades and modifications may also be downloaded.

Nordson reserves the right to make design changes to products and components to improve their function. These changes may occur between catalogue printings.

For more information, talk with your Nordson representative or contact your Nordson regional headquarters office.

European Subsidiaries:

Africa & Middle East

Phone: (31) 654 200734
Fax: (31) 842 208994
powder.systems@nl.nordson.com

East Europe

Phone: (31) 654 200734
Fax: (31) 842 208994
powder.systems@nl.nordson.com

Germany

Phone: (49) 211 92050
Fax: (49) 211 9252148
powder.systems@de.nordson.com

Poland

Phone: (48) 22 836 4495
Fax: (48) 22 836 7042
powder.systems@pl.nordson.com

Spain

Phone: (34) 96 313 2090
Fax: (34) 96 313 2244
powder.systems@es.nordson.com

Benelux

Phone: (31) 13 511 8700
Fax: (31) 13 511 3995
poeder.info@nl.nordson.com

Finland

Phone: (358) 9 530 8080
Fax: (358) 9 530 80850
powder.systems@se.nordson.com

Italy

Phone: (39) 02 904691
Fax: (39) 02 9078 2485
powder.systems@it.nordson.com

Portugal

Phone: (351) 22 961 9400
Fax: (351) 22 961 9409
powder.systems@pt.nordson.com

Sweden

Phone: (46) 40 680 1700
Fax: (46) 40 932 882
powder.systems@se.nordson.com

Czech/Slovak Republic

Phone: (4205) 4159 2411
Fax: (4205) 4124 4971
powder.systems@cz.nordson.com

France

Phone: (33) 1 64 121400
Fax: (33) 1 64 121402
powder.systems@fr.nordson.com

Norway

Phone: (47) 23 03 6160
Fax: (47) 23 68 3636
powder.systems@se.nordson.com

Russia

Phone: (7) 812 118 6263
Fax: (7) 812 118 6263
powder.systems@nl.nordson.com

Switzerland & Austria

Phone: (41) 61 411 38 38
Fax: (41) 61 411 38 18
powder.systems@ch.nordson.com

Denmark

Phone: (45) 43 66 0123
Fax: (45) 43 64 1101
powder.systems@dk.nordson.com



PowderPilot™

Nordson

The Simple Solution to Automated Powder Coating
Total System Control at your fingertips.



It's about control
and precision

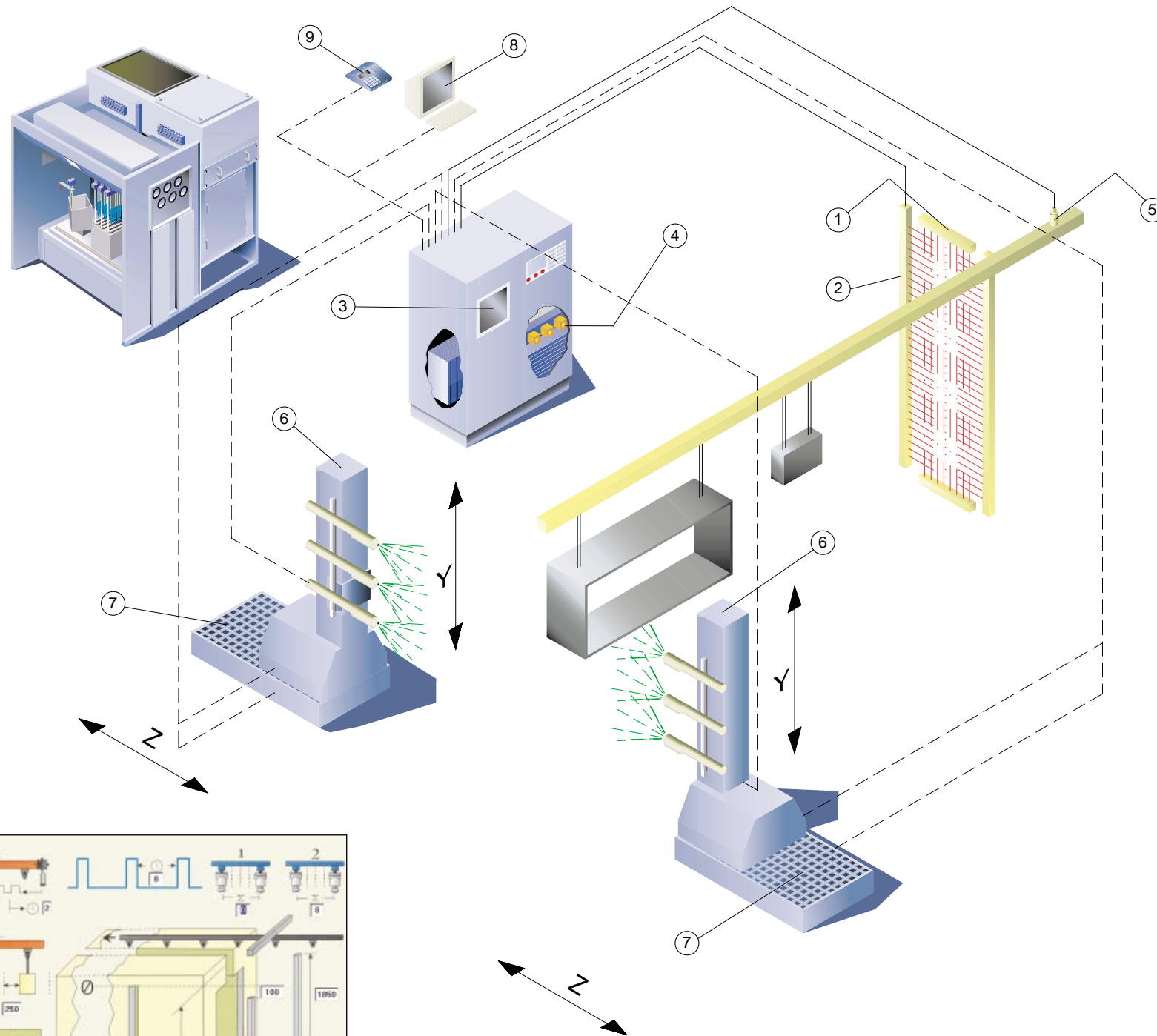
PowderPilot™

The Nordson PowderPilot is an easy-to-use control system, with software and hardware specifically designed for automated powder coating systems. Unique control screens complete with icons, enables ease of operation for anyone.

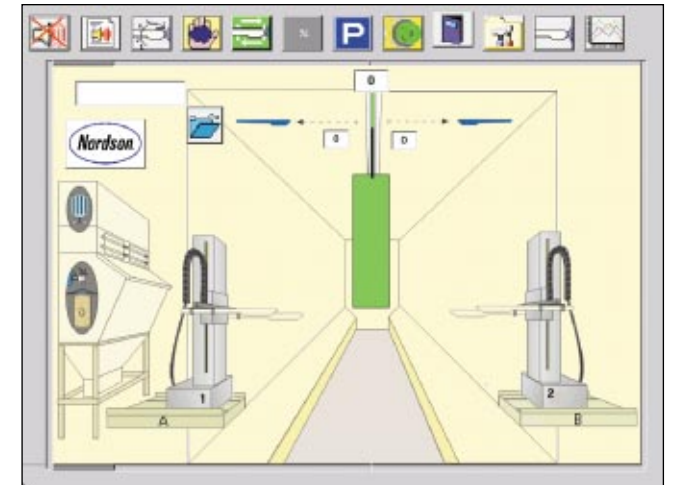
Features & Benefits

- Fingertip control via a touch-screen.
- One touch controls all the functions of an entire powder system.
- Powder savings with highly accurate control settings. (See literature PWR-95-700).
- Reduced rejects: Operator error is eliminated.
- Digital powder flow control* gives repeatable product finish and reduces powder usage.
- Coating recipes for thousands of different products. Each recipe contains all powder system settings required to coat a particular product. No product changeover time required.
- Full system diagnostics with fault finding and guidance for preventative maintenance.
- On-screen manuals.
- Remote system operation monitoring via modem or local network.

*Optional



Typical main screen with vanishing point view of the system components.



Systems Components

1. Beam Array - Product Width:

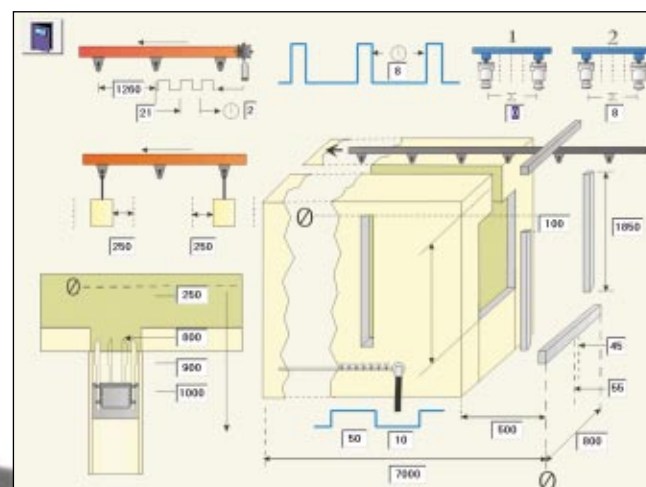
Standard Resolution array gives a 40mm resolution and the High Resolution array has a 15mm separation between discrete beams. The beam arrays have focusing lenses on the beams to prevent cross-talk and give a standard range of 6m.

2. Beam Array - Product Height:

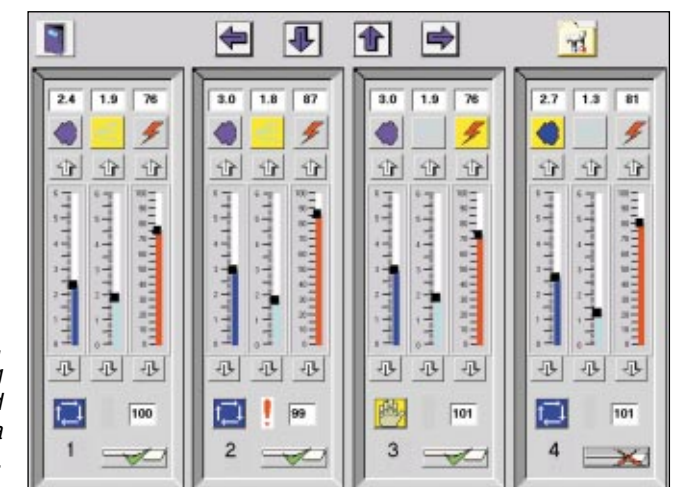
Standard Resolution array gives a 40mm resolution and the High Resolution array has a 10mm separation between discrete beams. The beam arrays have a range of 2m. For wider product widths, arrays with lenses to focus the beam are available.

3. Operator Interface:

A 15" colour touch-screen provides access for the Operator to system settings, no language is used, pictures and symbols make this the simplest system for an Operator to understand and operate.



Simple system configuration screens cut commissioning time and costs.



The gun control screen, where Flow and Atomising Air and Kv may be adjusted on screen and saved to a product recipe.

