

Model A20A Automatic Electric Spray Gun



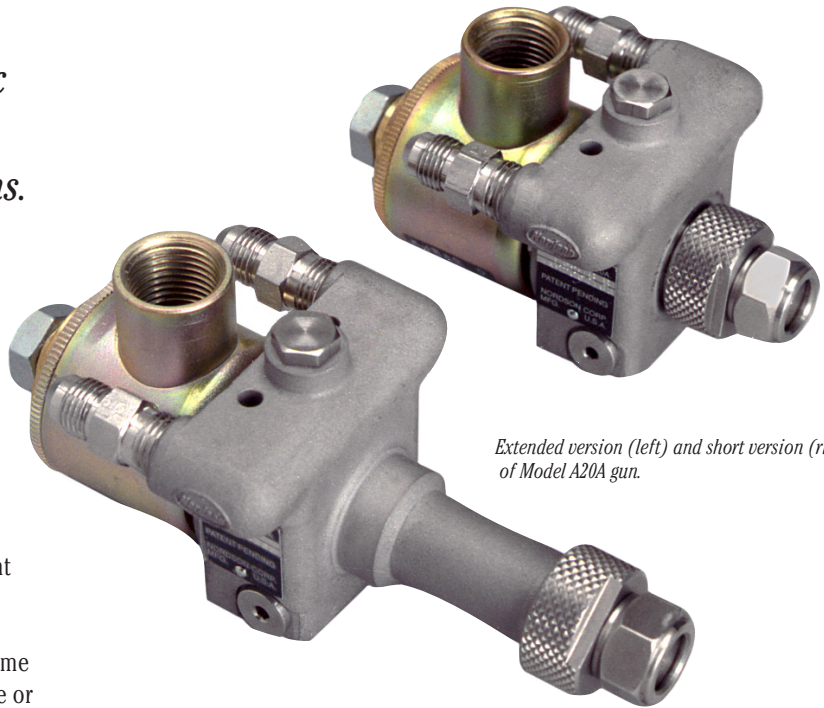
Automatic, high-cycle electric spray gun for high-speed container coating applications.

The patented Nordson® Model A20A automatic electric spray gun is a fast-cycle, airless gun designed for use in high-speed container coating applications. An advanced design of the industry-standard and production-proven Nordson Model A10A and A14A guns, the A20A gun features an integral solenoid that eliminates the need for air lines and provides fast, positive response and excellent repeatability. The removable-valve/seat module design facilitates easy replacement of the valve and seat assembly in minutes for minimal downtime without removing the gun from the spray machine or disconnecting hydraulic lines.

All wetted components of the Model A20A gun are of stainless steel construction for improved durability and compatibility with a wide range of water-based and solvent-based lacquers. The A20A gun is triggered by electronic controls, such as a Nordson FET timer, for more precise film deposition, accurate weight control and greater material savings.

Proprietary Nordson Nozzles

The Model A20A gun uses Nordson Controlled-Pattern or Cross-Cut nozzles for precise coating deposition, uniform distribution of coating and consistent coating weights. Proprietary Cross-Cut nozzles improve atomization at lower operation pressure to minimize overspray and bounce back for optimum material utilization. Controlled-Pattern nozzles provide uniform coating distribution, resulting in lower coating weights and reduced costs. The A20A gun utilizes nozzles mounted directly on the short gun or extended version.



Extended version (left) and short version (right) of Model A20A gun.

Flow Sentry Option

The Model A20A gun is compatible with the patented Nordson Flow Sentry® monitor. Installed with the gun or added later, this electronic system monitors the flow of coating material through the nozzle and automatically alerts the user to changes in flow caused by nozzle blockage, leakage or pump malfunctions. Use of the Flow Sentry option with the Model A20A gun further enhances the performance and quality of the can-coating operation, minimizing product rejects and providing optimum production quality.

Features and Benefits

- **Removable valve/seat module** permits fast, easy on-line disassembly and replacement for minimal downtime.
- **Integral solenoid** provides rapid, accurate response and eliminates the need for air lines.
- **No packing cartridges or moving seals** reduces maintenance requirements for improved efficiency.
- **Direct, electronic triggering** provides excellent repeatability and accurate coating weight control for improved material savings.
- **Stainless steel construction** improves durability for use with a wide range of lacquers for greater operating versatility.

Model A20A Automatic Electric Spray Gun

Specifications

Dimensions

Length

Short 4.88 in. (124 mm)

Extended 6.62 in. (168 mm)

Width 2.94 in. (75 mm)

Height 2.62 in. (67 mm)

Weight

Short 2.50 lbs. (1.13 kg)

Extended 2.75 lbs. (1.25 kg)

Electrical

24 VDC, 1.5 amperes

Fluid Pressure

1500 psi (10,400 kPa) maximum

Fluid Temperature

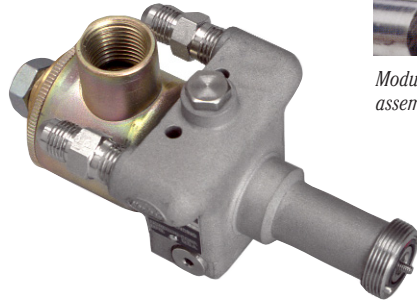
F (60 C) maximum

Certifications

ANAB ISO 9001:2000, ATEX/CE, FM



Module design facilitates easy on-line replacement of seat assembly in minutes.



Modular design features removable valve/seat.

Container Systems' Best Practices Pledge

At Nordson, our technology, equipment and expertise work together to offer the best solutions to our customers for their applications. This may result in better quality, improved manufacturing efficiency, less downtime, reduced coating material consumption, faster line speeds, or combinations of these and other factors that enable manufacturers to produce a better product at a lower cost. We work with our customers to improve their spray and manufacturing processes overall. It is with this continuous focus on Best Practices, that we partner with customers to find successful solutions for improved quality and productivity.

Nordson Package of Values®

Our exclusive Package of Values backs every Nordson product and system in every region and locale. The Nordson Package of Values includes: production testing, system engineering, installation assistance, customer service and operator training.

The combination of these features provides added value that is unmatched in the container manufacturing industry.



Nordson reserves the right to make design changes to products to improve their function. These changes may occur between printings.

For more information, talk with your Nordson representative or contact your Nordson regional headquarters office.

The Americas

Amherst, Ohio USA
Telephone: 440.985.4000

North America:

Facsimile: 440.985.5110
E-mail: container@nordson.com

South and Central America:

24-hour message service:
440.985.4797
E-mail: intcustomerservice@nordson.com

www.nordson.com

Europe

Erkrath, Germany
Telephone: 49.211.9205.0
Facsimile: 49.211.254658
E-mail: info@de.nordson.com

Japan

Tokyo, Japan
Telephone: 81.3.5762.2700
Facsimile: 81.3.5762.2701
E-mail: ppa.dm@nordson.co.jp

www.nordson.co.jp

Asia

Singapore
Telephone: 65.6.896.9630
Facsimile: 65.6.896.9631
E-mail: intcustomerservice@nordson.com

Australia/New Zealand

Sydney, NSW Australia
Telephone: 61.2.8814.4695
Facsimile: 61.2.9838.7394
E-mail: intcustomerservice@nordson.com

